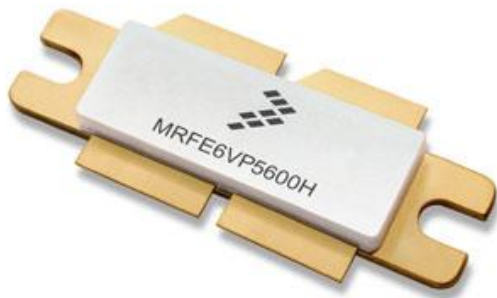


DATV Power Amplifier

Providing increased power levels for DATV is a challenge to all that go there, most have used the Mitsubishi power modules to achieve some sort of level. Now here in Australia repeater power levels are around 30 to 33watts average (100 to 120 PEP) remembering that measuring power levels for digital require special measuring techniques’.



W6pql has on his web site a 500 watt kit using a signal Mos-fet a MRFE6VP5600HR6.

http://www.w6pql.com/parts_i_can_provide.htm

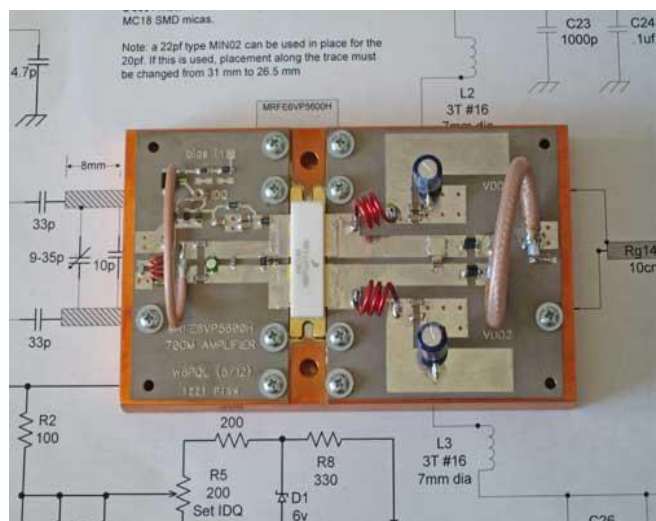
this site is worth looking at for other items that maybe of interest. A unit was purchased sometime ago but has not been put into service. Some people have indicated getting 400W output with digital and that would also depend on the parameters of the digital transmitter. However, with my limited knowledge with digital television

that would be impossible.

Normally these units would be run at around -6db down around 120w.

However that can be improved on by using better Mosfets that are made for digital television and also by using some form of digital correction.

But in realty you don't need that sort of power, for one the licence conditions would be breached and also once you are over the digital cliff effect you just don't need that sort of power levels. Also the right choice of antenna can increase the power to whatever power level is required.



VK3RTV is running 32w, while VK4RKC is around 30w meeting full broadcast specifications and licence conditions.

Digital ATV Group-VK4RKC